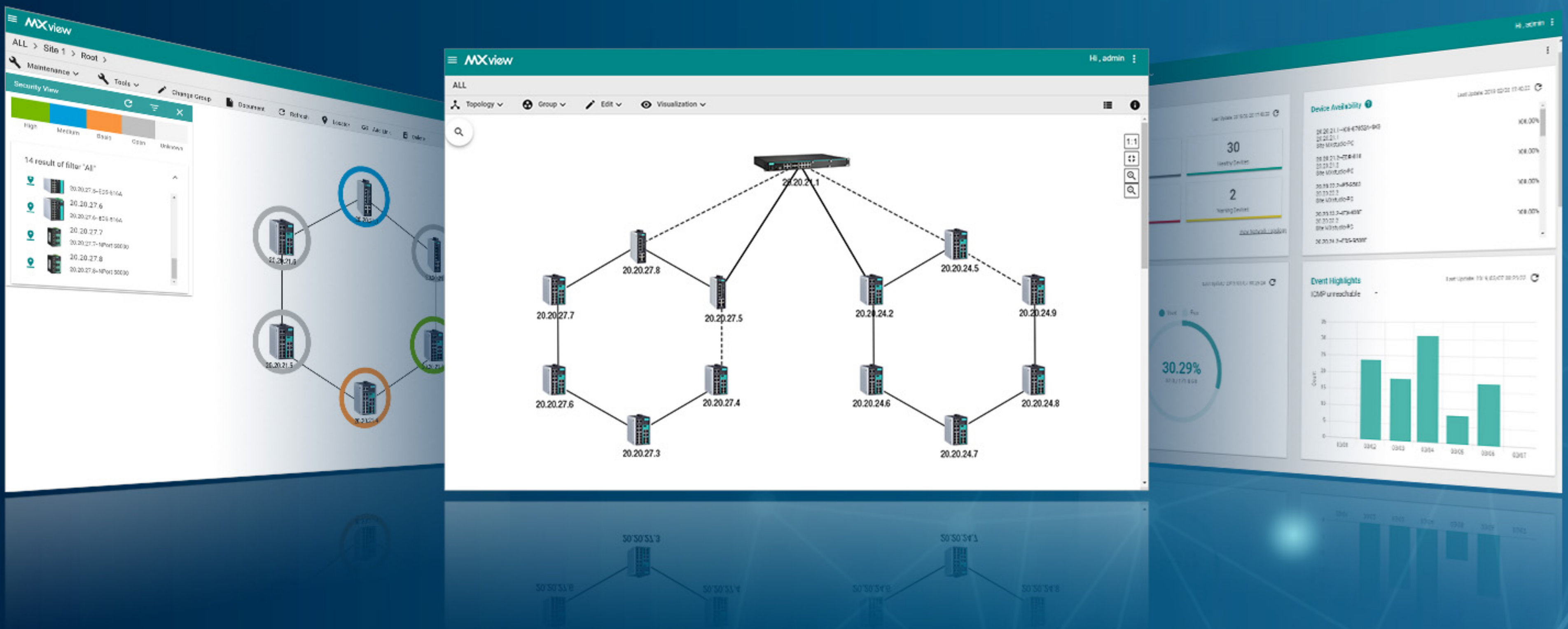


MXview Network Management Software



The Latest MXview Software Supports

- **Real-time monitoring of large-scale networks** with the ability to manage up to 10 sites with a total of 20,000 nodes.
- **Integration and centralized management** for SCADA systems, third-party applications with a web widget, and RESTful API interfaces.
- **Network dashboard** to check the network status conveniently.

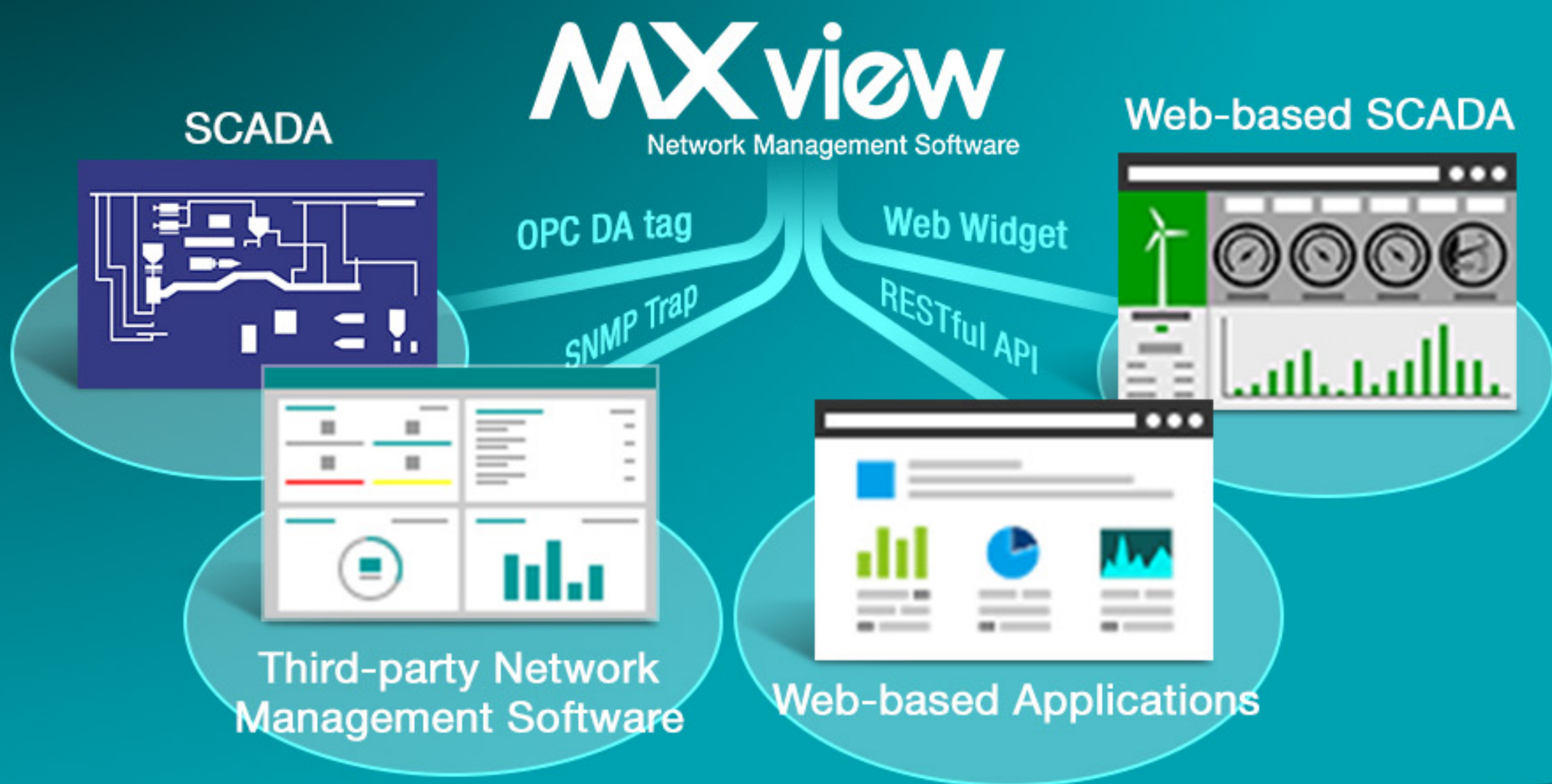
Free Download

Download the trial version of MXview network management software.

Why Network Management Software

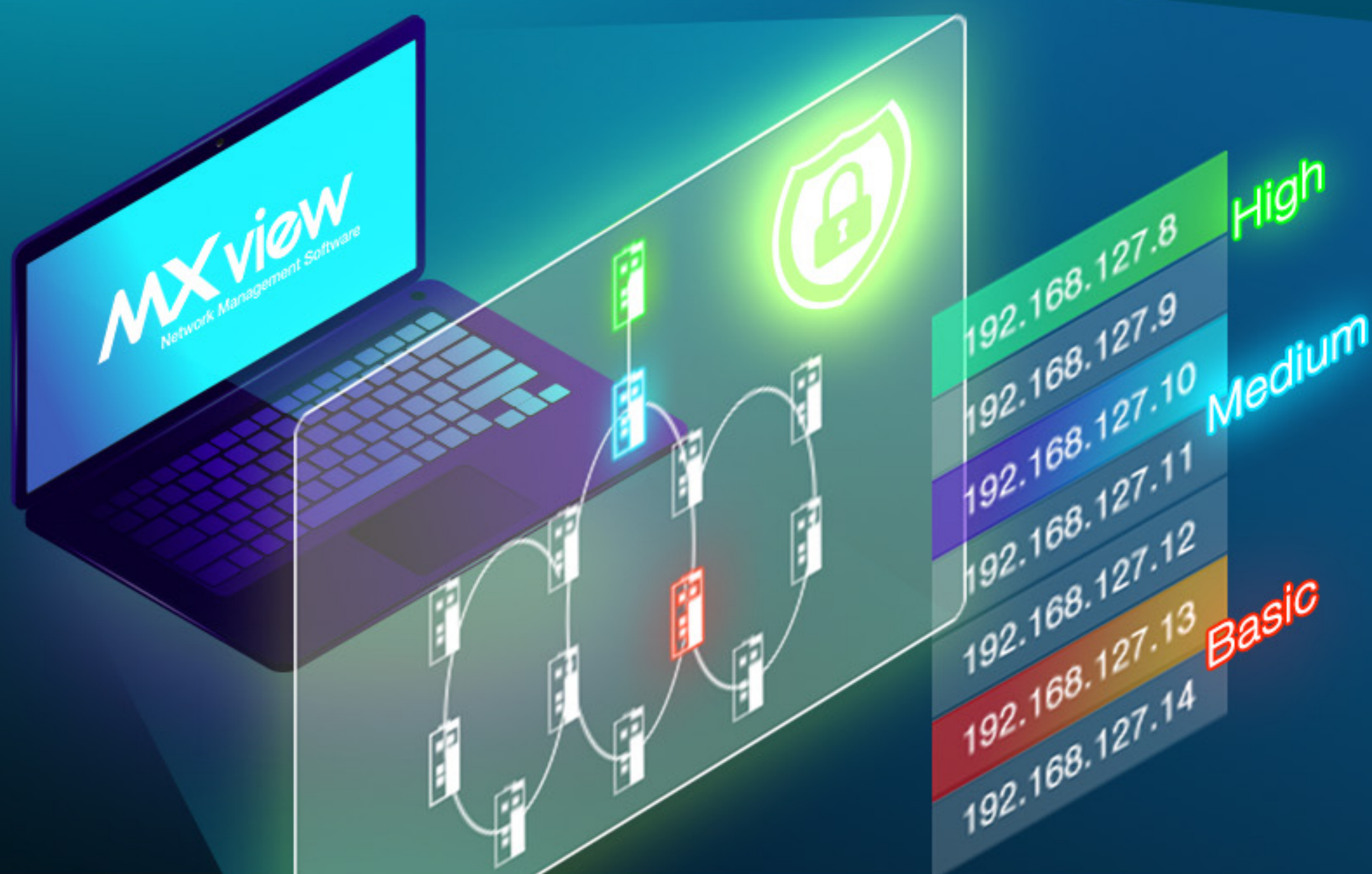
If the network status is not visible, it is often very difficult and time consuming to determine the root cause of system downtime. Moxa's MXview network management software is designed for configuring, monitoring, and diagnosing network devices on industrial networks. This integrated management platform allows you to discover network devices and SNMP/IP devices installed on subnets. All selected network components can be managed via a web browser from both local and remote sites.

MXview Industrial Network Management Software Helps You



Integrate network management into different applications

Monitor your network status anytime, anywhere



Check the security status of your networks

For more information, please visit [the product page.](#)